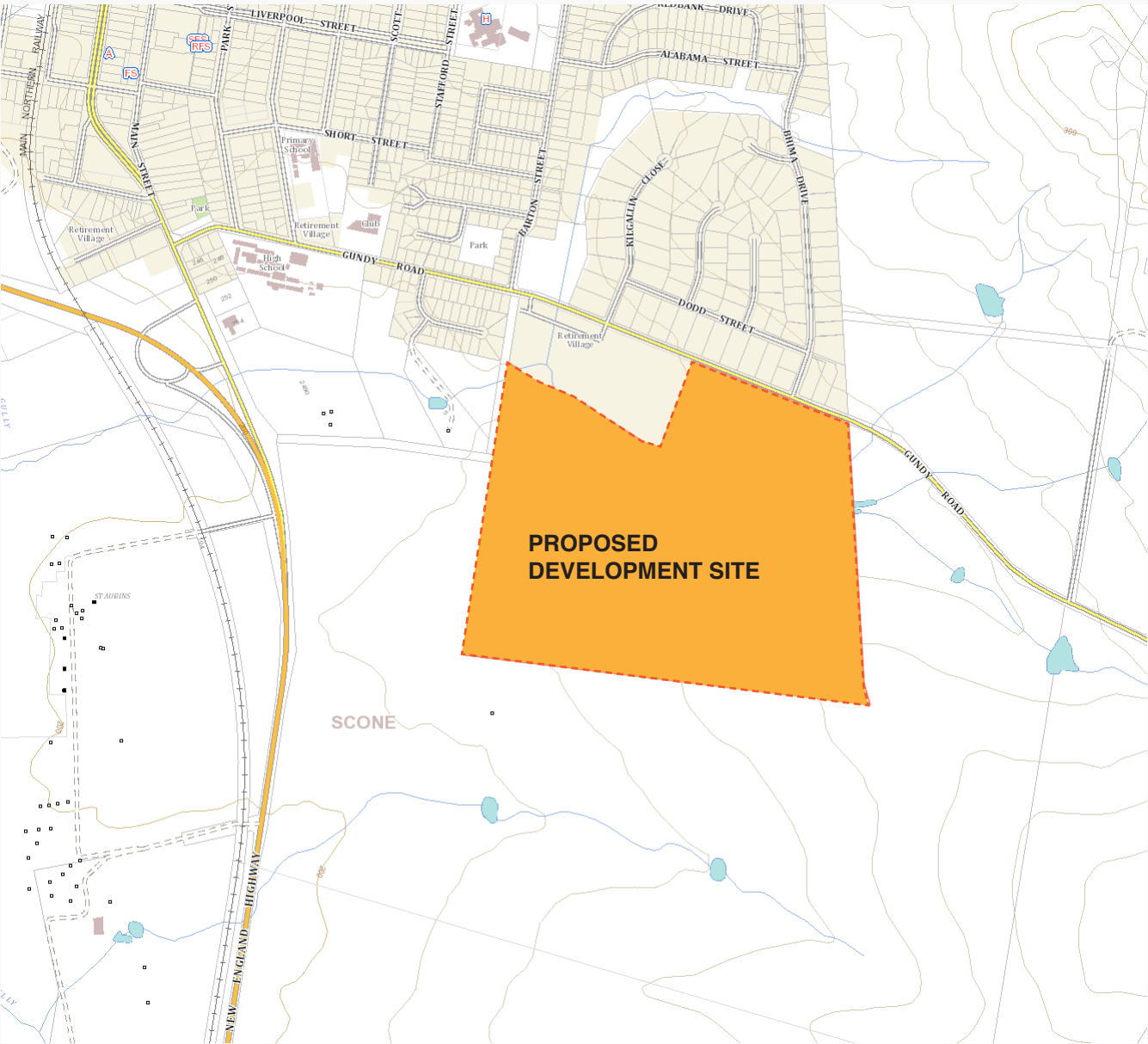


# Gundy Road, SCONE

Lot 2 / DP 1169320

## Development Application Landscape Design Report



### SHEET INDEX

L01	SITE PLAN
L02	STREET TREE MASTER PLAN
L03	STREET TREE SCHEDULE
L04	BOUNDARY BUFFER PLANTING
L05	BASIN PLANTING

### ISSUE DESCRIPTION

B	FOR REVIEW
B	FOR REVIEW
B	FOR REVIEW
B	FOR REVIEW
B	FOR REVIEW

### DATE

26/08/2021
26/08/2021
26/08/2021
26/08/2021
26/08/2021



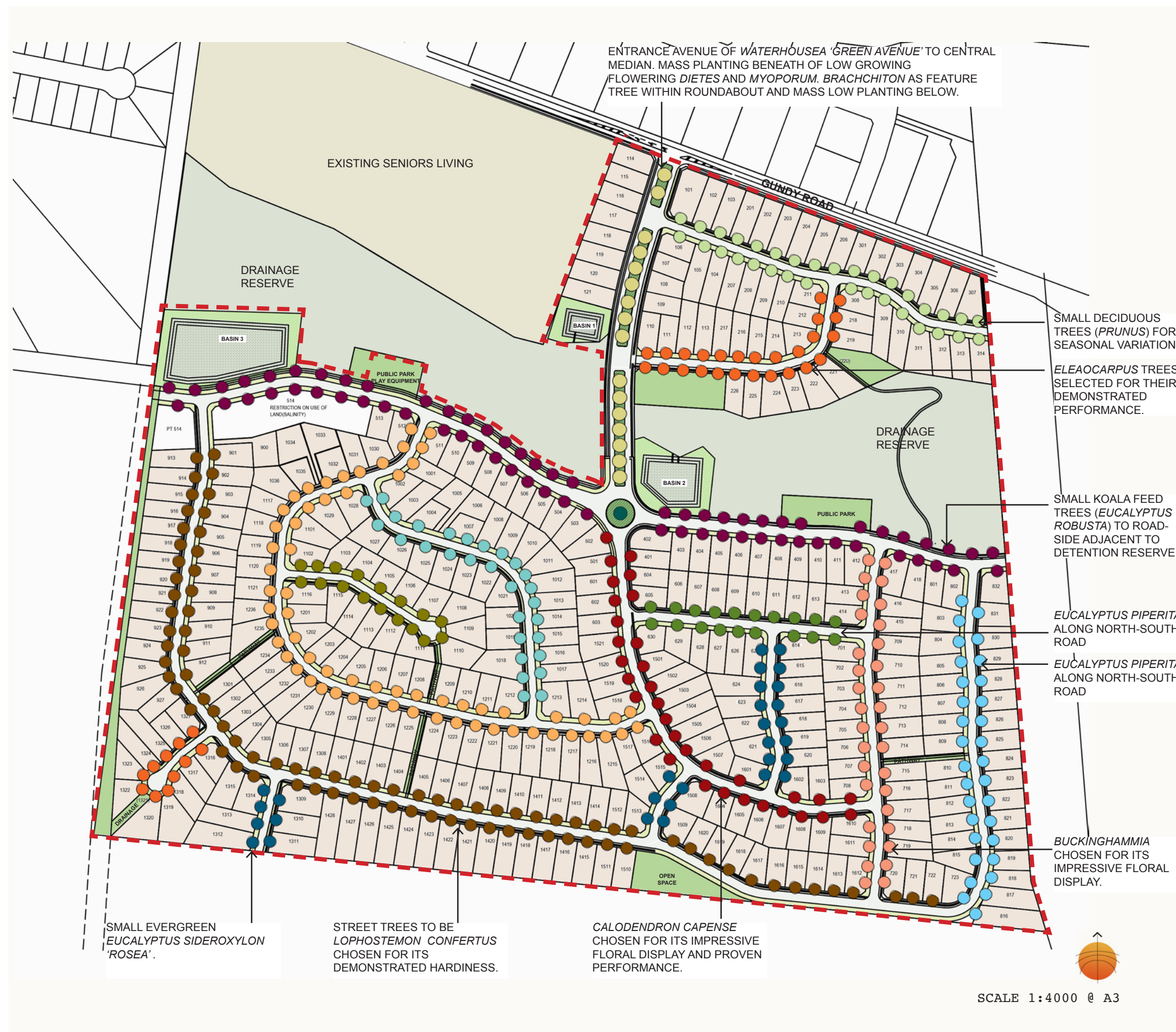
- LEGEND**
- SITE BOUNDARY
  - PROPOSED LOTS  
Housing subject to separate applications
  - PROPOSED OPEN SPACE AND CONNECTIONS  
Subject to future detail
  - PROPOSED MASS PLANTING  
Refer L02
  - DRAINAGE RESERVE  
Refer Ecologist's Report for details
  - EXISTING TREES TO BE RETAINED  
Refer Ecologist's Report for details
  - ✱

 ABORIGINAL MARKED TREE TO BE PROTECTED  
Refer Ecologist's Report for details
  - EXISTING TREES TO BE REMOVED  
Refer Ecologist's Report for details
  - PROPOSED 10m SCREEN PLANTING  
Refer L04
  - DETENTION BASINS  
Refer L05 for Planting Details  
Refer Engineer's Plans for details
  - PROPOSED FOOTPATH
  - PROPOSED VERGE
  - PROPOSED ROAD  
Refer to Engineer's drawings for details

SCALE 1:4000 @ A3

VENTURE CLOSE

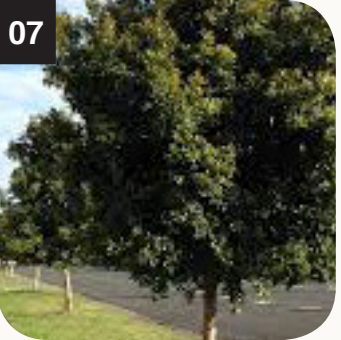






SUGGESTED PLANT SCHEDULE

Key	Botanical Name	Common Name	Pot Size	Mature Height	Mature Spread
Street Trees					
01	<i>Acer negundo</i> ‘Sensation’	Box Elder	75L	10m	8m
02	<i>Backhousia citriodora</i>	Lemon Myrtle	75L	8m	4m
03	<i>Brachychiton acerifolius</i>	Illawarra Flame Tree	75L	12m	6m
04	<i>Buckinghamia celsissima</i>	Ivory Curl Tree	75L	10m	4m
05	<i>Calodendrum capense</i>	Cape Chestnut	75L	10m	6m
06	<i>Corymbia gummifera</i>	Red Bloodwood	75L	15m	10m
07	<i>Elaeocarpus reticulatus</i>	Blueberry Ash	75L	8m	5m
08	<i>Eucalyptus piperita</i>	Sydney Peppermint	75L	20m	10m
09	<i>Eucalyptus robusta</i>	Swamp Mahogany	75L	15m	5m
10	<i>Eucalyptus sideroxylon</i> ‘Rosea’	Red Flowering Ironbark	75L	15m	6m
11	<i>Lophostemon confertus</i>	Brush Box	75L	5m	4m
12	<i>Pistacia chinensis</i>	Chinese Pistachio	75L	10m	6m
13	<i>Prunus cerasifera</i> ‘Oakvale Crimson Spire’	Purple-leaf Cherry Plum	75L	8m	4m
14	<i>Tristaniaopsis laurina</i> ‘Luscious’	Water Gum	75L	8m	4m
15	<i>Waterhousea floribunda</i> ‘Green Avenue’	Weeping LillyPilly	75L	15m	9m
MASS PLANTED MEDIAN / ROUNDABOUT					
Grasses					
16	<i>Dietes grandiflora</i>	Wild Iris	140mm	1.2m	1.2m
17	<i>Westringia</i> ‘Zena’	Coastal Rosemary	140mm	1m	1m
18	<i>Liriope muscari</i> ‘Just Right’	Liriope	140mm	0.5m	0.5m
Groundcovers					
19	<i>Hardenbergia</i> ‘Meema’	Meema	140mm	0.4m	2m
20	<i>Myoporum parvifolium</i>	Boobialla	140mm	0.3m	2m

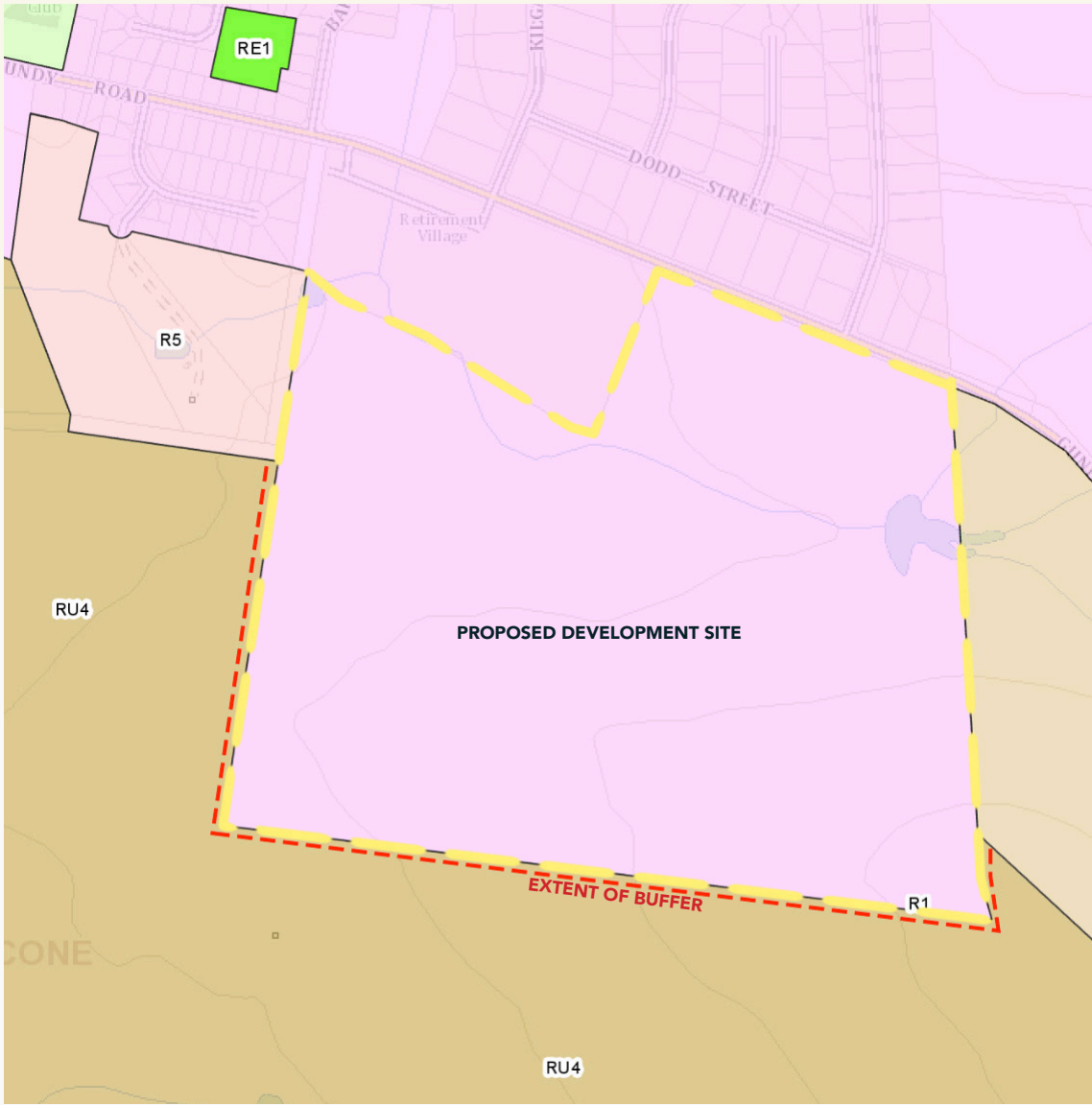




LANDSCAPE BUFFER PLANTING

Landscape Approach

- A ten (10) metre vegetation corridor is proposed, for the purpose of creating a visual buffer, along the site boundary and adjacent land zoned RU4 (refer plan below). The buffer is proposed within the RU4 zoned land.
- A mix of appropriate native species is proposed (in accordance with the Ecologist’s recommendations) which have a demonstrated ability to be sustainable with low maintenance intervention. Native species will also enhance the environmental value associated with the buffer planting.
- The landscape treatment buffer is proposed to contain a suitable combination of trees, shrubs and grasses to create a visual diversity and promote a rural woodland character.
- Retention of existing significant hollow bearing trees within the buffer.
- A staggered planting pattern is proposed in order to simulate a natural setting.

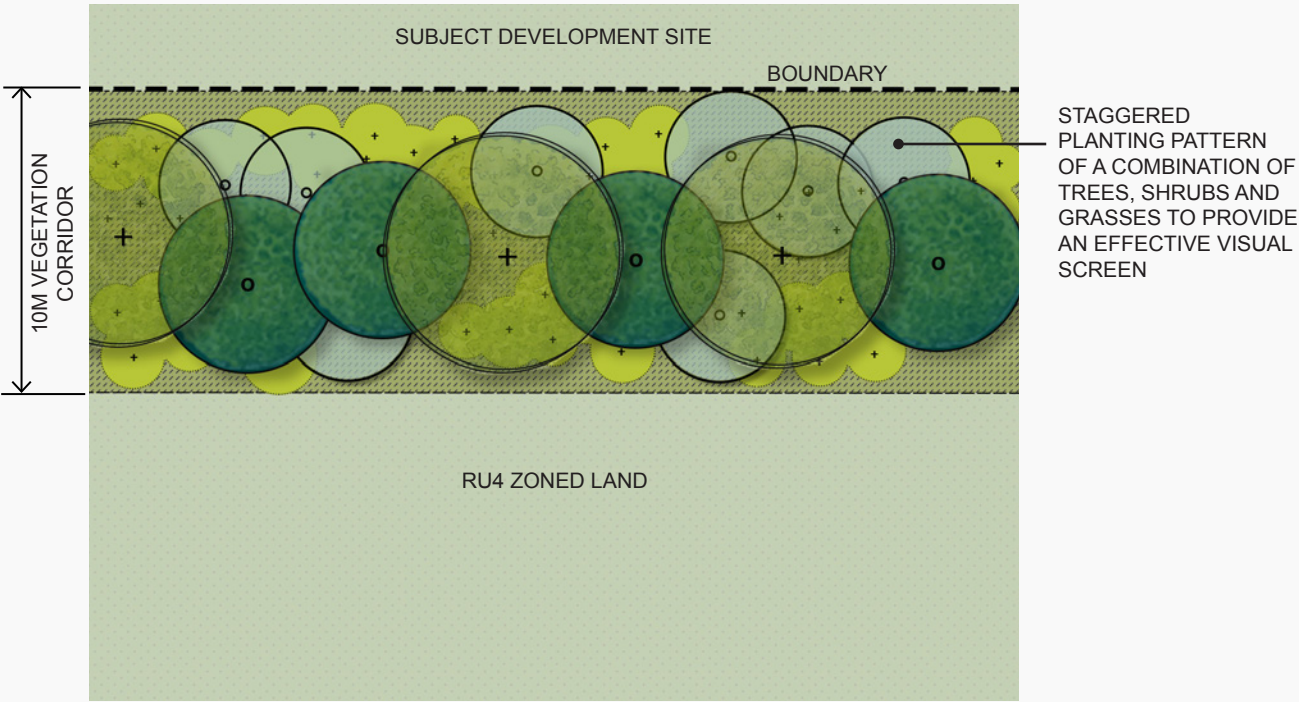


SITE PLAN

PLANT SCHEDULE

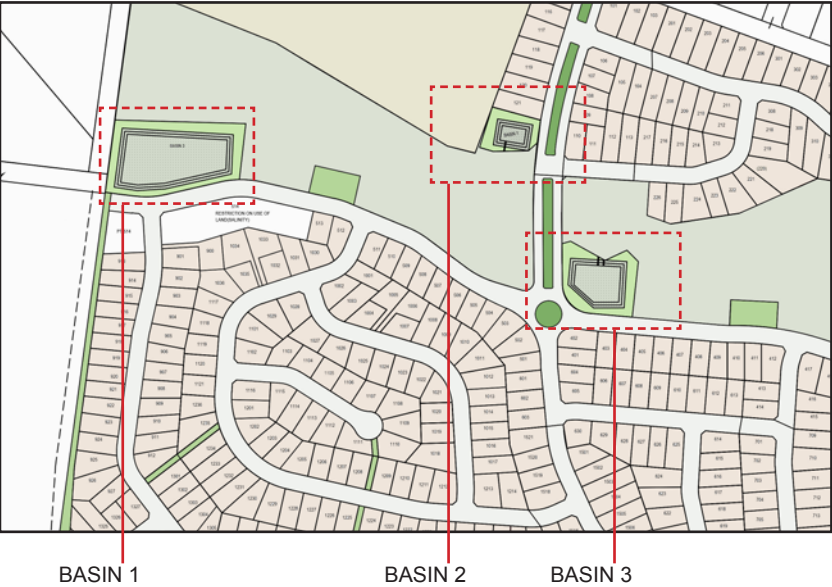
Key	Botanical Name	Common Name	Mature Height	Mature Spread	
Canopy Trees					STAKE AND TIE TREES. ALLOWANCE FOR 3 - 5 METRES BETWEEN EACH ROW OF TREES AND WITHIN EACH ROW THEMSELVES.
	<i>Eucalyptus ‘albemol’</i>	White Box	20m	10m	
	<i>Eucalyptus moluccana</i>	Grey Box	30m	15m	
	<i>Eucalyptus melliodora</i>	Yellow Box	15m	8m	
	<i>Notelaea microcarpa</i>	Native Olive	10m	5m	
Shrubs					
	<i>Acacia implexa</i>	Hickory Wattle	8m	7m	
	<i>Beyeria viscosa</i>	Sticky Wallaby Bush	4m	2m	
	<i>Acacia buxifolia</i>	Box-leaf Wattle	3m	2m	
Groundcovers and Grasses					
	<i>Aristida ramosa</i>	Purple Wiregrass	0.9m	0.5m	
	<i>Austrostipa aristiglumis</i>	Speargrass	2m	1.2m	
	<i>Austrostipa scabra</i>	Slender Bamboo Grass	0.6m	0.6m	
	<i>Cyperus gracilis</i>	Slender Flat-sedge	0.3m	0.3m	
	<i>Dianella revoluta</i>	Flax Lily	1m	0.8m	
	<i>Geranium solanderi</i>	Native Geranium	0.5m	0.5m	
	<i>Lomandra filiformis</i>	Mat Rush	0.4m	0.4m	
	<i>Themeda triandra</i>	Kangaroo Grass	1.5m	0.5m	
	<i>Wahlenbergia communis</i>	Bluebell	0.7m	0.5m	

\*Drainage Reserve Plan of Management: Box-Gum Grass Woodland Recommended Planting List



INDICATIVE PLANTING PLAN

SITE PLAN

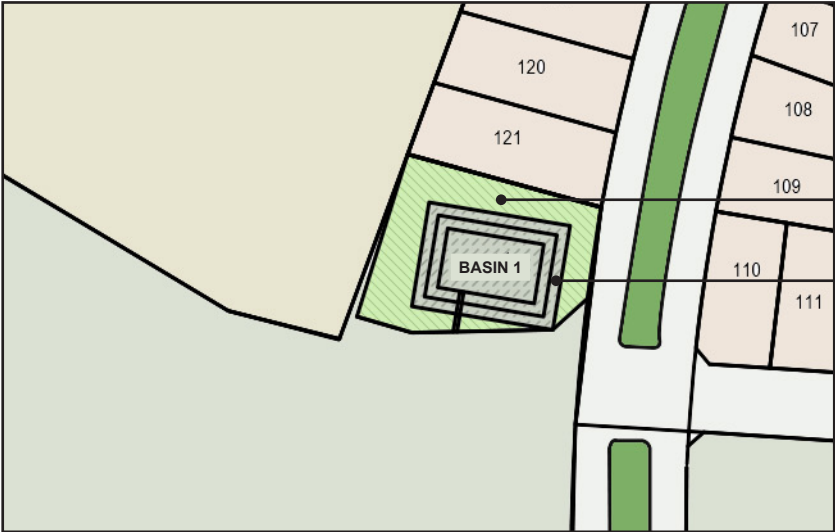


**LEGEND**

HYDRO SEED MOUND TREATMENT  
COUCH TURF

MASS NATIVE GRASS PLANTING  
REFER PLANT SCHEDULE

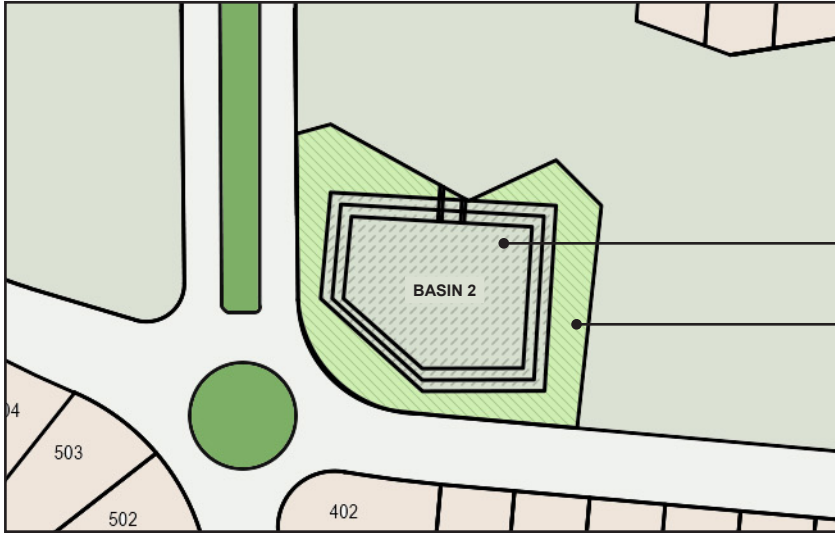
NATIVE GRASS - PLANTING SCHEDULE			
BOTANICAL NAME	COMMON NAME	POT SIZE	DENSITY
<i>Austrodanthonia fulva</i>	Wallaby Grass	Tubestock	6/m2 - Plant
<i>Dichelachne micranthe</i>	Plum Grass	Tubestock	in species
<i>Echinopogon caespitosus</i>	Hedgehog Grass	Tubestock	groups of
<i>Poa labillardieri</i>	Tussock Grass	Tubestock	3-5
<i>Themeda australis</i>	Kangaroo Grass	Tubestock	



NATIVE GRASS PLANTING TO EXTENT  
OF PROPOSED BATTER. REFER TO  
ENGINEER'S PLANS FOR DETAILS  
AND PLANT SCHEDULE FOR SPECIES.

HYDROSEED TREATMENT (COUCH)

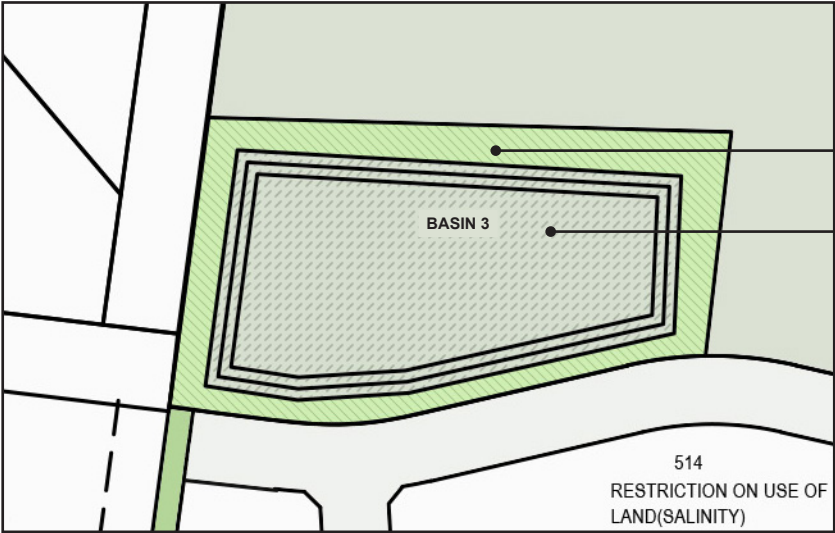
BASIN 1



HYDROSEED TREATMENT (COUCH)

NATIVE GRASS PLANTING TO EXTENT  
OF PROPOSED BATTER. REFER TO  
ENGINEER'S PLANS FOR DETAILS  
AND PLANT SCHEDULE FOR SPECIES.

BASIN 2



NATIVE GRASS PLANTING TO EXTENT  
OF PROPOSED BATTER. REFER TO  
ENGINEER'S PLANS FOR DETAILS  
AND PLANT SCHEDULE FOR SPECIES.

HYDROSEED TREATMENT (COUCH)

BASIN 3